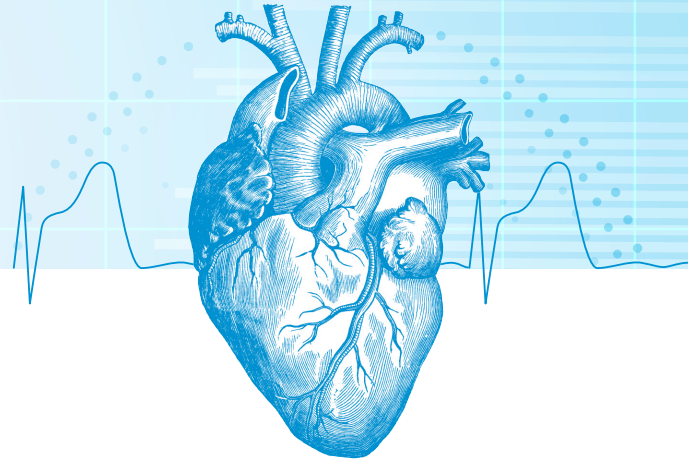


# From Door to Discharge

## Elevating the Patient Journey

14th annual Missouri Baptist Heart Center Symposium



## Agenda

### GRAND BALLROOM

#### Welcome

- 7–8 a.m. .... Registration, exhibits, breakfast, and video cases
- 8–8:15 a.m. .... Introductory remarks  
*Stuart Higano, MD, FACC, FSCAI, Medical Director, Heart LifeLine Alliance (HLLA)*  
*Ann Abad, MBA, President, Missouri Baptist Medical Center*

#### Pre-Hospital

- 8:15–8:30 a.m. .... Patient-Related Delays in STEMI Care  
*Stuart Higano, MD, FACC, FSCAI, Medical Director, HLLA*
- 8:30–8:45 a.m. .... Delivery of STEMI Care by EMS: State of the Art 2026  
*Jeffrey Siegler, MD, Associate Professor, WashU Medicine*

#### Emergency Department

- 8:45–8:50 a.m. .... Live Demonstration of EKGs  
*Stuart Higano, MD, FACC, FSCAI, Medical Director, HLLA*  
*Gregory Jones, DO, FACEP, Assistant Medical Director, Missouri Baptist Medical Center*
- 8:50–9:05 a.m. .... AI Interpretation of EKGs  
*William Frick, MD, Electrophysiology Fellow, WashU Medicine*
- 9:05–9:20 a.m. .... EKG Case Examples  
*Gregory Joseph Beirne, DO, FACEP, Assistant Professor, WashU Medicine*
- 9:20–9:30 a.m. .... Panel Discussion  
**Moderator:** *Stuart Higano, MD, FACC, FSCAI, Medical Director, HLLA*  
*Jeffrey Siegler, MD, WashU Medicine*  
*Gregory Jones, DO, Assistant Medical Director, Missouri Baptist Medical Center*  
*William Frick, MD, Electrophysiology Fellow, WashU Medicine*  
*Gregory Joseph Beirne, DO, FACEP, Assistant Professor, WashU Medicine*
- 9:30–9:50 a.m. .... Break—Exhibits Open

#### Cath Lab

- 9:50–10:10 a.m. .... Cardiogenic Shock in the CCL—Current Approaches  
*Jeremy Tietjens, MD, Missouri Baptist Medical Center, BJC Medical Group*
- 10:10–10:30 a.m. .... The Unstable STEMI Patient: What You Need to Know About ECMO  
*Floyd Daniel, BS, CCP, Chief Perfusionist, Missouri Baptist Medical Center*
- 10:30–10:50 a.m. .... The Role of Cardiac Surgery for the STEMI Patient  
*Linda Schulte, MD, Missouri Baptist Medical Center*

(Continued)

- 10:50–11:05 a.m. .... **Panel Discussion: How to Pick a Support Device Q&A**  
*Jeremy Tietjens, MD, Missouri Baptist Medical Center, BJC Medical Group*  
*Floyd Daniel, BS, CCP, Chief Perfusionist, Missouri Baptist Medical Center*  
*Linda Schulte, MD, Missouri Baptist Medical Center*
- 11:05–11:35 a.m. .... **Debate: Managing Multivessel CAD in the STEMI Patient**  
**Moderator: Richard Bach, MD, FACC, Professor, WashU Medicine**
- **Limit PCI to Culprit Lesion**  
*Gus Theodos, MD, FACC, FSCAI, Missouri Baptist Medical Center, BJC Medical Group*
  - **Just Fix Them All**  
*Prashanth Thakker, MD, MHPE, Assistant Professor, WashU Medicine*
- 11:35–11:50 a.m. .... **Panel Discussion**  
*Richard Bach, MD, FACC, Professor, WashU Medicine*  
*Gus Theodos, MD, FACC, FSCAI, Missouri Baptist Medical Center, BJC Medical Group*  
*Prashanth Thakkar, MD, MHPE, Assistant Professor, WashU Medicine*
- 11:50 a.m.–Noon ..... **Break—Exhibits Open**

**TENT (ENTRANCE ACROSS FROM GRAND BALLROOM)**

## **Lunch and Learn**

- Noon–12:20 p.m. .... **Updated Cardiac Arrest Guidelines from ACC/AHA**  
*Gabriel Soto, MD, BJC Medical Group*
- 12:20–12:30 p.m. .... **Q&A**
- 12:30–1:15 p.m. .... **The Journey of a Patient**  
*Special guest*
- 1:15–1:30 p.m. .... **Break—Exhibits Open**

**GRAND BALLROOM**

## **CCU, Cardiology Unit, and Cardiac Rehab**

- 1:30–1:50 p.m. .... **Management of STEMI in the CCU**  
*Mitchell Padkins, MD, Cardiovascular Intensivist, Missouri Baptist Medical Center*
- 1:50–2:10 p.m. .... **Heart of the Matter: Integrating Evidence-Based Therapies for ACS**  
*Anastasia Armbruster, Pharm D, FACC, BCCP, Cardiology Clinical Pharmacist, Missouri Baptist Medical Center*
- 2:10–2:30 p.m. .... **Managing CHF in the STEMI Patient**  
*Justin Hartupree, MD, PhD, Associate Professor, WashU Medicine*
- 2:30–2:50 p.m. .... **Importance of Cardiac Rehab**  
*Ronald J. Krone, MD, FACC, FSCAI, Professor, WashU Medicine*

## **Final Q&A**

- 2:50–3 p.m. .... **Panel**  
**Moderator: Jeremy Tietjens, MD, Missouri Baptist Medical Center, BJC Medical Group**  
*Mitch Padkins, MD, Cardiovascular Intensivist, Missouri Baptist Medical Center*  
*Anastasia Armbruster, Pharm D, FACC, BCCP, Cardiology Clinical Pharmacist, Missouri Baptist Medical Center*  
*Justin Hartupree, MD, PHD, Associate Professor, WashU Medicine*  
*Ronald J. Krone, MD, FACC, FSCAI, Professor, WashU Medicine*

## **Closing**

- 3–3:10 p.m. .... **Closing Remarks**  
*Stuart Higano, MD, FACC, FSCAI, Medical Director, HLLA*

**Missouri Baptist Medical Center**

